

PEDF Antibody
Rabbit mAb
Catalog # AP92040

Specification

PEDF Antibody - Product Information

Application	WB, FC
Primary Accession	P36955
Clonality	Monoclonal
Other Names	
EPC1; OI12; OI6; PEDF; PIG35; Serpinf1;	
Isotype	Rabbit IgG
Host	Rabbit
Calculated MW	46312 Da

PEDF Antibody - Additional Information

Dilution	WB~~1:1000 FC~~1:10~50
Purification	Affinity-chromatography
Immunogen	A synthesized peptide derived from human PEDF
Description	Neurotrophic protein; induces extensive neuronal differentiation in retinoblastoma cells. Potent inhibitor of angiogenesis. As it does not undergo the S (stressed) to R (relaxed) conformational transition characteristic of active serpins, it exhibits no serine protease inhibitory activity.
Storage Condition and Buffer	Rabbit IgG in phosphate buffered saline , pH 7.4, 150mM NaCl, 0.02% sodium azide and 50% glycerol. Store at +4°C short term. Store at -20°C long term. Avoid freeze / thaw cycle.

PEDF Antibody - Protein Information

Name SERPINF1

Synonyms PEDF

Function

Neurotrophic protein; induces extensive neuronal differentiation in retinoblastoma cells. Potent inhibitor of angiogenesis. As it does not undergo the S (stressed) to R (relaxed) conformational transition characteristic of active serpins, it exhibits no serine protease inhibitory activity.

Cellular Location

Secreted. Melanosome. Note=Enriched in stage I melanosomes

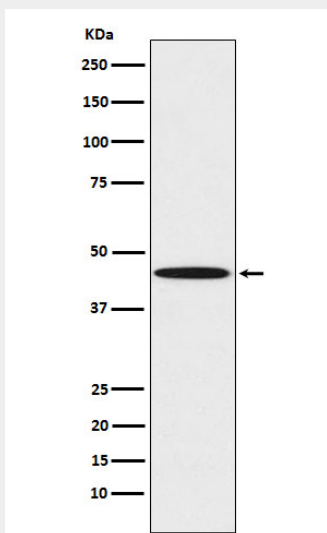
Tissue Location

Retinal pigment epithelial cells and blood plasma.

PEDF Antibody - Protocols

Provided below are standard protocols that you may find useful for product applications.

- [Western Blot](#)
- [Blocking Peptides](#)
- [Dot Blot](#)
- [Immunohistochemistry](#)
- [Immunofluorescence](#)
- [Immunoprecipitation](#)
- [Flow Cytometry](#)
- [Cell Culture](#)

PEDF Antibody - Images

Western blot analysis of PEDF expression in K562 cell lysate.